

DN 5000 Temperature Sensor P-Clamp Installation Instructions M046.1

1 – 626,020,46x.x4

DN 5000 P-Clamp Temp Sensor Upgrade Kit

Contents: 1 – 801,813,28x.x1 $\frac{3}{16}$ " P-Clamp
1 – M046.x Installation Instructions

Tools Required: Phillips Screw Driver

Installation Instructions:

1. Remove product from column E9, if product is present.
2. Locate the temperature sensor mounting bracket inside the refrigerated cabinet.
3. Remove the first mounting screw on the left side of the mounting bracket.
4. Place the P-Clamp over the harness.
5. Verify the connector on the temp sensor is on tight.
6. Insert the mounting screw into the P-Clamp panel mount and insert back into the bracket. Refer to figure 1. Tighten the screw.

Note: P-Clamp is factory installed on venders serialized 0170-8121AA and higher.

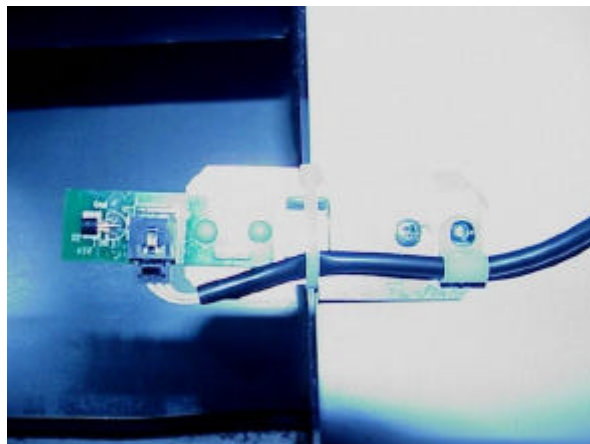


Figure 1